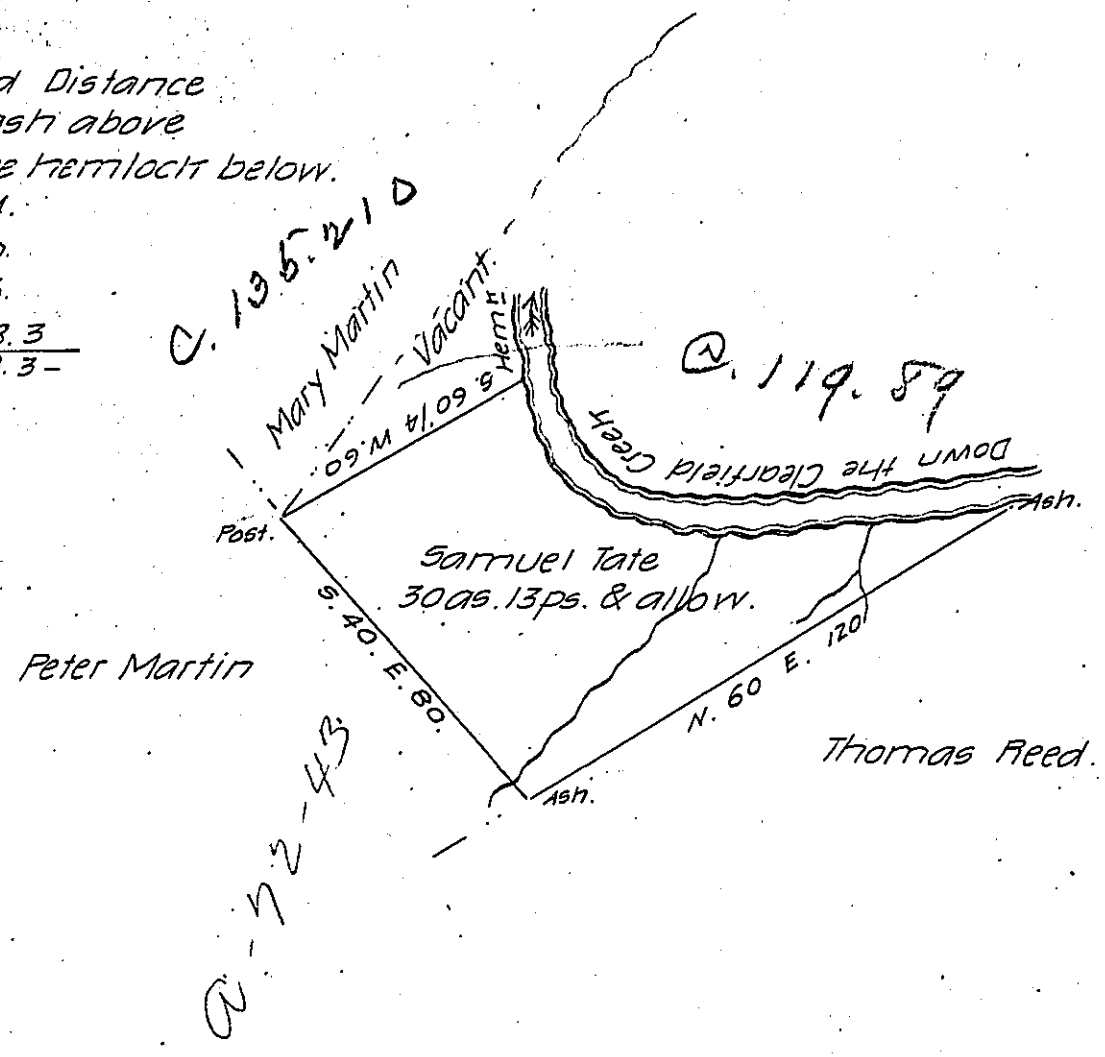


Course- and Distance
 from the ash above
 down to the hemlock below.
 N. 81. W. 14.
 West. 60.
 N. 74. W. 16.
 N. 60 1/4 W. $\frac{28.3}{118.3}$



Draught of a Tract of Land Situate in Lawrence Township, Clearfield County on the North side of the Clearfield Creek containing thirty acres and thirteen perches and the usual allowance of six per cent for roads &c. Surveyed the 27th day of September 1834. In pursuance of a Warrant dated the 28th day of August 1834 granted to Samuel Tate for 30 acres.

David Ferguson

To Jacob Spangler Esqr.
 Surveyor General.

(Note) The above survey is the land the Warrant calls for but claimed by the heirs of William Tate on an Improvement title.

David Ferguson D.S.

IN TESTIMONY that the above is a copy of the original remaining on file in the Department of Internal Affairs of Pennsylvania, made conformably to an Act of Assembly approved the 16th day of February 1833, I have hereunto set my hand and caused the Seal of said Department to be affixed at Harrisburg, this twenty-sixth day of April 1907.

Leaac D. Dawson
 Secretary of Internal Affairs.